

RECEPTACLES &  
MATERIAL HANDLING



# IMPACT PRODUCTS

For almost 60 years, Impact Products has been partnering with our clients to ensure their successes. Impact Products is the dominant manufacturer of supplies and accessories to the cleaning industry. We operate office, manufacturing and distribution centers in: Toledo, Ohio; Guilford, Connecticut; and Buena Park, California.



- GATOR® PLUS CONTAINERS & LIDS ..... 4
- GATOR® CONTAINERS & LIDS .....5
- CONTAINER ACCESSORIES .....7
- THIN BIN® CONTAINERS & LIDS ..... 9
- WASTEBASKETS ..... 10
- METAL WASTEBASKETS .....11
- RECEPTACLES.....12
- SMOKING MANAGEMENT.....13
- DOORSTOPS ..... 14
- UTILITY CARTS.....15
- TABLEMOVER™ ..... 16
- JANITOR'S CARTS .....17
- MAIDS' BASKETS..... 18
- GRABBERS ..... 19

## What is "Material Handling"?

In Industry, Material Handling can be defined as the control, protection, storage and movement of materials not only throughout a companies value added process, but also their entire supply chain. Without material handling, the entire value stream comes to a screeching halt.

Outside of Industry, Material Handling can be defined as the movement and storage of almost any object. Think about storing things on a shelf in your garage, using a boat lift at a marina, using a wheelbarrow in your garden, using an engine hoist to remove your cars engine or loading a bike into a car mounted rack.

Source: [www.materialhandlinginsider.com](http://www.materialhandlinginsider.com)



# GATOR® PLUS CONTAINERS & LIDS



7732-3

## Gator® Plus Containers

Added Features like venting and cinches in our Gator® Plus series set them apart from the standard Gator®.

- 6 air-venting passages provide up to 75% reduction in the force to remove a filled liner
- Built-in poly bag cinches keep liners in place
- Deeper wider bottom hand grip pockets slot for easier container dumping
- Offset ridge design allows container to nest without jamming

ITEM	DESCRIPTION	CS QTY
7732-5	32 gal. - Black	6/cs
7732-3	32 gal. - Gray	6/cs
7732-11	32 gal. - Blue	6/cs
7732-11R	32 gal. - Blue Recycle	6/cs
7732-16	32 gal. - Yellow	6/cs
7732-6	32 gal. - Red	6/cs
7744-5	44 gal. - Black	4/cs
7744-11	44 gal. - Blue	4/cs
7744-11R	44 gal. - Blue Recycle	4/cs
7744-16	44 gal. - Yellow	4/cs
7744-3	44 gal. - Gray	4/cs
7744-6	44 gal. - Red	4/cs
7755-3	55 gal. - Gray	2/cs



7733-3

## Gator® Plus Lids

ITEM	DESCRIPTION	CS QTY
7733-5	32 gal. Lid - Black	6/cs
7733-11	32 gal. Lid - Blue	6/cs
7733-16	32 gal. Lid - Yellow	6/cs
7733-3	32 gal. Lid - Gray	6/cs
7733-6	32 gal. Lid - Red	6/cs
7745-5	44 gal. Lid - Black	4/cs
7745-16	44 gal. Lid - Yellow	4/cs
7745-3	44 gal. Lid - Gray	4/cs
7745-6	44 gal. Lid - Red	4/cs
7745-11	44 gal. Lid - Blue	4/cs
7756-3	55 gal. Lid - Gray	2/cs



GC200103

## Gator® Containers

Containers are each one-piece molded and have sturdy handles.

- Ideal for a variety of applications, in an array of colors.
- Made in the USA and rugged, these containers and lids pair perfectly
- NSF Standard 2 & 21 listed and approved.

ITEM	DESCRIPTION	CS QTY
GC200101	20 gal. - White	6/cs
GC200103	20 gal. - Gray	6/cs
GC200104	20 gal. - Blue	6/cs
GC320101	32 gal. - White	5/cs
GC320103	32 gal. - Gray	5/cs
GC440101	44 gal. - White	4/cs
GC440103	44 gal. - Gray	4/cs



GL320203

## Gator® Container Lids

Coordinating lids are each a one-piece molded design with drain channels.

- The drain channels meet NSF standards
- The rugged lid design is made in the USA and available in an array of colors
- NSF Standard 2 & 21 listed and approved

ITEM	DESCRIPTION	CS QTY
GL200201	20 gal. Lid - White	6/cs
GL200203	20 gal. Lid - Gray	6/cs
GL200204	20 gal. Lid - Blue	6/cs
GL320201	32 gal. Lid - White	5/cs
GL320203	32 gal. Lid - Gray	5/cs
GL440201	44 gal. Lid - White	4/cs
GL440203	44 gal. Lid - Gray	4/cs



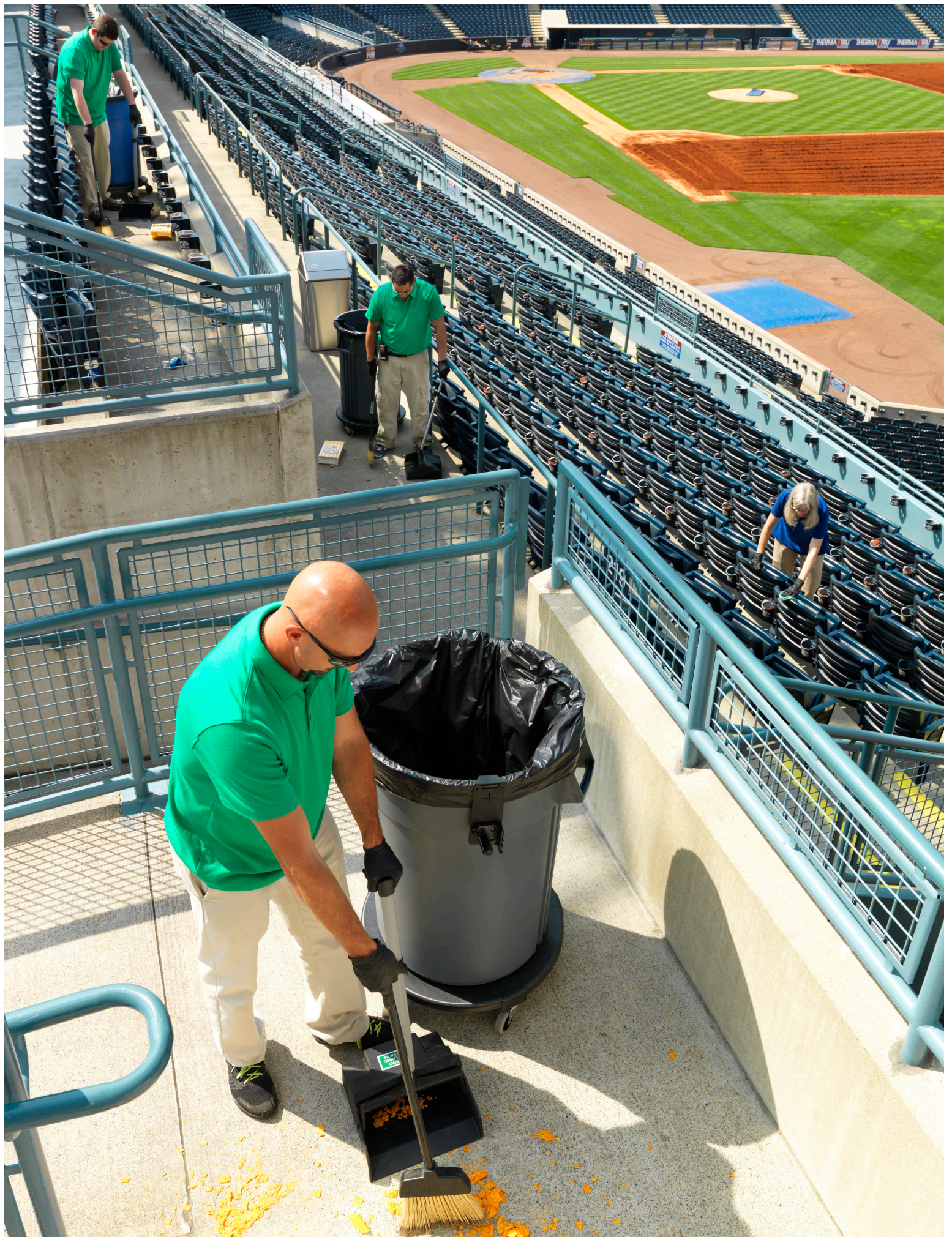
GC100101

## Gator® 10-Gallon Container and Lids

Perfect size container to carry ice in your food service or hospitality locations.

- Ergonomic handle for easy gripping and reduced slippage
- Contoured Lids for stacking
- NSF Standard 2 listed and approved

ITEM	DESCRIPTION	CS QTY
GC100101	White Trash Can	6/cs
GC100101IL	White Can "Ice Only" Logo	6/cs
GC100103	Gray Trash Can	6/cs
GL100201	10 gal. Lid - White	6/cs
GL100203	10 gal. Lid - Gray	6/cs



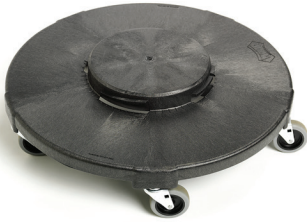


## Dome Top

Fits 44-gallon Gator® containers, competitive containers and 55-gallon drums.

- Ideal for indoor and outdoor applications
- Keeps waste in; rain and pests out
- Built-in handles allow for easy lifting; flat space on top for storage of trays

ITEM	DESCRIPTION	CS QTY
7747-3	Black	1/cs



## Gator® Dolly

Vented to prevent suction between dolly and container.

- Structural foam molded, extremely durable
- Five 3" non-marking quiet swivel casters
- Securely attaches to 20, 32, 44, and 55 gallon containers

ITEM	DESCRIPTION	CS QTY
7704	Black	2/cs



## GatorAnchor® Dolly

Structural foam construction with 3" quiet, non-marking casters.

- Ideal for use by hospitals, nursing facilities, schools, contract cleaners, and office buildings
- 25% larger diameter than standard dollies; 50% improvement in tip resistance over standard
- Universally "anchors" 32, 44, and 55 gallon containers

ITEM	DESCRIPTION	CS QTY
7708	Black	2/cs



## Gator® Caddy

Organize your tools and accessories in the nine available pockets.

- Caddy aprons around container and ties to the handles
- Fits 32 and 44-gallon containers
- Water resistant synthetic fabric

ITEM	DESCRIPTION	CS QTY
7705	Yellow	6/cs

# CONTAINER ACCESSORIES



## GatorMate™ Portable Caddy

Fits over rim and handle of 32, 44, and 55-gal. Gator® and competitive units.

- Holds cleaning tools, roll towels, plastic liners, gloves, putty knives, and more
- Take off the Gator® container and use unit as a portable cleaning/storage caddy
- Private labeling available
- 150 Value Plus Toilet Bowl Caddy fits conveniently in slots

ITEM	DESCRIPTION	CS QTY
1850	Blue	4/cs



## GateMate® Plus Hook and Holder

Innovative solution for storage due to limited space in janitor's closets.

- Holds brooms, brushes, mop handles, dusters and other cleaning tools
- Holds oval and round items up to 1 <sup>3</sup>/<sub>16</sub>" diameter
- Hardware for hanging included
- Structural foam base made of 100% recycled material

ITEM	DESCRIPTION	CS QTY
1853	Black	6/cs



## Tool Holder

Fit up to 3 GateMate Plus® holders (#1853) on this 18" mounting bar.

- Position holders anywhere on mounting bar to fit a variety of tools
- Conveniently provides storage and organization
- Easy to mount tool holder bar can be placed horizontally or vertically

ITEM	DESCRIPTION	CS QTY
7220	Black	12bx/cs



# THIN BIN® CONTAINERS & LIDS



## Thin Bin® 23 Gallon Container and Lids

High capacity container for tight places, made of a durable polyethylene blend.

- Ergonomic handles; recessed hand grips molded into bottom for easy emptying
- Smooth inside surface for easy cleaning
- Textured finish outside for attractive, commercial look
- Swingtop lids sold separately, flat top recycling lid available



7023-15



7024-15

ITEM	DESCRIPTION	CS QTY
7023-5	Black	4/cs
7023-11R	Blue Recycle	4/cs
7023-15	Beige	4/cs
7023-3	Gray	4/cs
7023-4	Brown	4/cs
7023-11	Blue	4/cs
7023-14	Green	4/cs
7023-14R	Green - Recycling	4/cs
7024-15	Swingtop Lid - Beige	4/cs
7024-3	Swingtop Lid - Gray	4/cs
7024-4	Swingtop Lid - Brown	4/cs
7024-5	Swingtop Lid - Black	4/cs
7024-11	Swingtop Lid - Blue	4/cs
7024-14	Swingtop Lid - Green	4/cs



# WASTEBASKETS



7703-4

## Soft-Sided Plastic Wastebasket

Seamless soft-sided construction will not dent, leak or rust.

- Molded of high quality polyethylene for strength and durability
- Rolled rim for easy pick up and delivery

ITEM	DESCRIPTION	CS QTY
7701-15	14 qt. - Beige with Pinch'm™	12/cs
7701-3	14 qt. - Gray with Pinch'm™	12/cs
7701-4	14 qt. - Brown with Pinch'm™	12/cs
7701-5	14 qt. - Black with Pinch'm™	12/cs
7701-11	14 qt. - Blue with Pinch'm™	12/cs
7701-11R	14 qt. - Blue Recycle with Pinch'm™	12/cs
7702-11	28 qt. - Blue (No Pinch'm™)	12/cs
7702-11R	28 qt. - Blue Recycle (No Pinch'm™)	12/cs
7702-15	28 qt. - Beige (No Pinch'm™)	12/cs
7702-3	28 qt. - Gray (No Pinch'm™)	12/cs
7702-4	28 qt. - Brown (No Pinch'm™)	12/cs
7702-5	28 qt. - Black (No Pinch'm™)	12/cs
7703-11	41 qt. - Blue (No Pinch'm™)	12/cs
7703-11R	41 qt. - Blue Recycle (No Pinch'm™)	12/cs
7703-15	41 qt. - Beige (No Pinch'm™)	12/cs
7703-3	41 qt. - Gray (No Pinch'm™)	12/cs
7703-4	41 qt. - Brown (No Pinch'm™)	12/cs
7703-5	41 qt. - Black (No Pinch'm™)	12/cs



7695-15

## Fire Resistant Wastebasket

Contains fire without burning and will not melt or collapse.

- Made of fiberglass; meets most stringent fire approval standards
- Rounded corners add strength and are easy to clean; UL Approved
- Required for food service, healthcare, hospitality, schools and office buildings

ITEM	DESCRIPTION	CS QTY
7695-15	27 qt. - Beige	6/cs
7700-15	14 qt. - Beige	6/cs



1302-3

## Round Metal Wastebasket

A variety of colors and sizes to fit your application and space.

- Designed for fire resistance
- Manufactured from high quality steel, with no-mar baked enamel finish
- Reinforced wire rims for extra strength

ITEM	DESCRIPTION	CS QTY
1302-3	28 qt. - Gray	6/cs
1302-4	28 qt. - Brown	6/cs
1303-3	46 qt. - Gray	3/cs





## Bullet 21 Gal. Plastic Indoor/Outdoor Receptacle

Ideal container for areas with limited space, rugged structural foam.

- Strap-secured lid for easy emptying
- Uniquely designed interior straps hold poly bag securely out of sight
- Balanced "light-touch" door hides refuse and keeps out rain and animals

ITEM	DESCRIPTION	CS QTY
8870-15	Beige	1/cs



## Small Step-On Receptacle with Plastic Liner

Baked enamel finish

- Smooth durable step-on mechanism provides infection and odor control
- Includes plastic liner, 11 x 11"

ITEM	DESCRIPTION	CS QTY
13200-1	21 qt. - White	1/cs



## 45 Gal. Vanguard Indoor/Outdoor Trash Receptacle

Structurally foamed polyethylene is durable and will never rust, leak or corrode.

- Convenient hinged top allows for easy emptying of poly bags or rigid liner
- Tight fitting, two spring-loaded doors that keeps out rain and pests

ITEM	DESCRIPTION	CS QTY
8750-4	Brown	1/cs



## Butler™ Outdoor Smoker's Receptacle

This unit enhances image and saves on maintenance costs.

- Spun aluminum center chute and a steel lined container for extinguishing cigarettes
- Added weight in base makes unit stable in high traffic or windy areas
- Easy waste removal from the low-profile container
- Pre-drilled hole accommodates standard lock for security

ITEM	DESCRIPTION	CS QTY
4450-3	Gray Granite	1/cs



## Tabletop Ashtray

Heat-resistant plastic construction is perfect for indoor or outdoor use.

- Extra deep wells for added safety
- Private labeling available

ITEM	DESCRIPTION	CS QTY
1007	Black	72/cs



## Wall Mounted Ashtray

Ashtray comes with internal liners, 1½" L for small or 3" L for large

- Attractive design for any area; locks for security
- UV-treated; gray exterior on all units to help blend into surroundings
- Safe for outdoor use, won't rust or corrode

ITEM	DESCRIPTION	CS QTY
4451	Small Wall	6/cs

# DOORSTOPS



## Mini Door Stop

Flexible rubber wedge provides a simple stop for most doors.

- Ideal for use when moving furniture, stripping floors, and high traffic flow
- Small but strong enough to keep doors open for all your maintenance needs.

ITEM	DESCRIPTION	CS QTY
7260	Brown	24/bg; 12bg/cs



## Regular Door Stop

Durable, impact-resistant rubber construction withstands daily use.

- Extra-wide footprint holds doors securely in any position
- Great for contract cleaners and maintenance personnel
- Eliminates use of ugly, unsafe, homemade wooden door stops
- Heavy duty rubber

ITEM	DESCRIPTION	CS QTY
7263	Gray	12/cs



## Super Door Stop

Heavy duty rubber door stop fits a variety of door clearances.

- Bright color for safety and high visibility
- Non-marking bottom protects your floors
- For industrial applications

ITEM	DESCRIPTION	CS QTY
7265	Yellow / Green	12/cs



## 2 Shelf Utility Cart

**Sturdy Structural Foam will not rust, dent, chip or peel**

- Perfect for transporting equipment, tools, and other heavy loads in any environment
- Attractive for use in offices, restaurants and other high profile areas
- Rounded corners protect walls and furniture

ITEM	DESCRIPTION	CS QTY
7002	Gray	1/cs



## 3 Shelf Bussing Cart

**Lightweight and maneuverable; 200 lbs. capacity and 4" heavy-duty casters.**

- Durable construction resists scratches, chips and rust
- Textured shelves sized to carry large loads and reduce return trips
- Rounded corners protect walls and furniture
- Replacement Parts Available: #7006C - Casters

ITEM	DESCRIPTION	CS QTY
7006	Light Blue	1 Bussing Cart per Case

# TABLEMOVER™



## TableMover™

Reduce back injuries and labor costs with this ergonomically designed mover.

- Made of durable and unbreakable HDPE plastic
- Fits most standard folding tables 4 x 12 or smaller
- Accommodates tabletop thickness of 7/8" or less; holds up to 150 lbs.

ITEM	DESCRIPTION	CS QTY
7376	Fluorescent Yellow Green	1 /cs







## Janitor's Cart with 25 Gallon Yellow Vinyl Bag

Will hold a 20 or 32 gallon trash receptacle on the front platform

- Specially designed foldable handholds keep hands out of trash
- Adjustable center shelf; 8" heavy-duty fixed wheels; 2 ½" non-marking swivel casters
- Includes 25 gallon yellow synthetic fabric bag held in with six bag clips

ITEM	DESCRIPTION	CS QTY
6850	Gray / Yellow Vinyl	1/cs



## Gator® Compact Cart with 25-Gallon Blue Vinyl Bag

Molded-in areas for vacuum, mops, bottles, brooms, brushes and putty knives.

- Contoured design allows easy movement in tight areas and helps prevent damage to walls
- 25 gallon zippered refuse bag conceals trash or will hold a plastic trash liner
- Textured front platform securely holds a mop bucket or a 32 gallon refuse container
- 8" fixed and 3" swivel, high-density rubber wheels; non-marking and quiet
- Moisture dam separates wet and dry areas

ITEM	DESCRIPTION	CS QTY
6855	Gray / Yellow Vinyl	1/cs



## Impact® Deluxe Janitor Cart, Black w/ Yellow Vinyl Bag

Black Janitor Cart with Yellow Impact Logoed Vinyl Zip Bag

- 25-gallon vinyl bag with zipper logoed with Impact.
- Has a Lid to cover to hide unsightly trash or laundry.
- Has an adjustable middle shelf and plenty of extra storage space.
- Quiet Castors for a perfect solution for day cleaning.

ITEM	DESCRIPTION	CS QTY
T0048-00	Black / Yellow Vinyl	1/cs



## Impact® Locking Cabinet

Adds secure storage to janitor's carts for added peace of mind

- Provides secure storage for valuable or sensitive items.
- Designed for easy installation in our #T0048-00 Deluxe Janitor Cart.
- Made from sturdy HDPE material.

ITEM	DESCRIPTION	CS QTY
T0049-00	Yellow	1/cs

# MAIDS' BASKETS



1803

## Maids' Basket and Inserts

Use inserts with maids basket to hold quart bottles, aerosols, etc.

- High comfort handle; heavy-duty construction
- High sides prevent bottles and aerosols from falling out
- Each insert holds 3 bottles (sold separately)

ITEM	DESCRIPTION	CS QTY
1803	Gray	6/cs
1802	Blue	6/cs
1802I	Insert - Blue	200/cs





### E-Z Grabber 3706

A durable solution featuring an aluminum shaft and pistol grip.

- Rubber grips can grab objects up to 4 1/2" wide
- Strong shaft supports up to 2 pounds
- Eliminates bending to pick up litter

ITEM	DESCRIPTION	CS QTY
3706	Silver - 30 in. Length	12/cs



### 36" Grabber

Use this grabber to extend your reach and pick up objects of all sizes.

- Metal shaft with plastic grippers and handles
- Ideal for picking up bottles and garbage outdoors
- Powerful claws grip small and odd shaped objects

ITEM	DESCRIPTION	CS QTY
6210	Silver / Black	6/cs



**ProGuard®**



**DiversaMed®**



**Gator®**



**Oxygen-Pro**




**True Count Cutlery**




**Naturelle®**

# Your Go-To for


 Cleaning & Dusting


 Dispensing

 Floor Care


 Gloves

 Microfiber

 Personal Protective Equipment

 Receptacles & Material Handling

 Safety

 Washroom

**Impact®**  
Products



 **Supply Source**

SupplySourceGlobal.com

1.800.333.1541